

# Cell Assistant

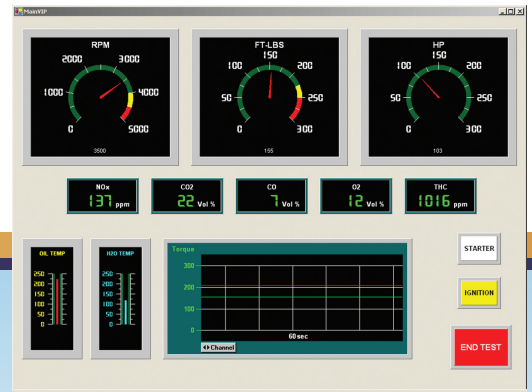
for Windows® - Test Automation Software

## Features

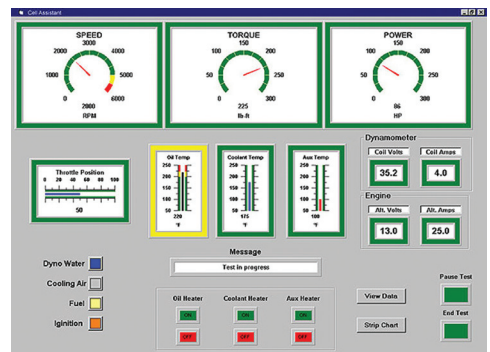
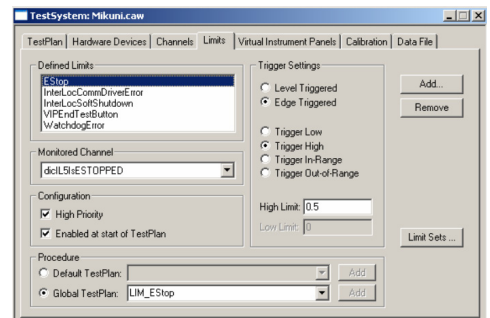
- MS Windows based, PC compatible
- Includes an embedded programming language (DSBasic), which provides a powerful tool for writing automated test scripts and programs.
- Includes a pre-programmed Excel based test schedule solution that allows test automation in an environment that doesn't require low level programming experience
- Built-in driver library for Dyne Systems controls and a variety of third party devices
- Virtual Instrument Panels (VIP) are fully customizable for creating virtual meters, gauges, and digital control devices
- User-definable data logging capability, including rate of collection and selectable data formats (ASCII txt and csv)
- Alarming parameters are adjustable, both upper and lower alarm limits are available.
- Capability to set limits on most channel types, including trigger configuration and trigger levels, function creation and assignment for limit actions
- Channel calibration capability for each individual analog device channel
- Multi-level password protection for test system security

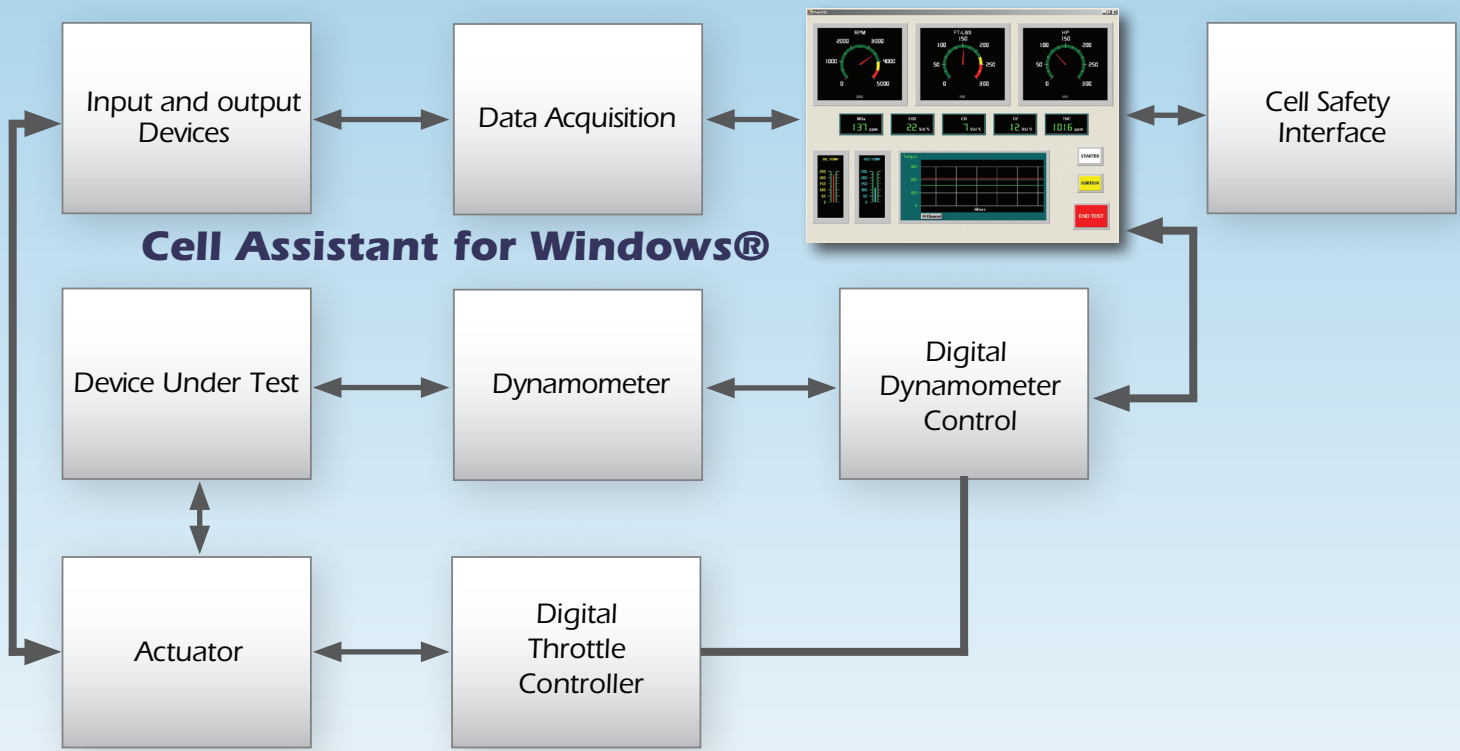
## Testing Applications

- Engine
- Electric Motor / Alternator / Generator
- Transmission / Transaxle / Differential
- Component / Gear Box / Lubricants



Cell Assistant for Windows® (CA4W) dynamometer test automation software provides an all-encompassing computer software application for test cell automation. Integrating both data collection and control into one software package affords the synchronization of data gathered from all controls and devices. This easy to configure software solution allows the user to create tests in an intuitive spreadsheet format that does not require Basic language programming experience. The user-configurable Virtual Instrument Panel (VIP) is customizable to meet the user's data display requirements.





## Dyne Systems Product Line

### Closed Multi-Loop Dynamometer & Throttle Control

- Inter-Loc V
- DS630 Inter-Loc V Throttle Controller

### Closed Single-Loop Dynamometer Control

- Dyn-Loc IV
- Dyn-Loc V

### Closed Loop Throttle Control

- DTC-1
- DS830 Stand-Alone Throttle Controller

### Open Loop Dynamometer Control

- DS820 Eddy Current PAU

### Closed Loop Water Flow Control

- EWC-1

### 5-Gas Exhaust Analyzer

- XM2000

### Data Acquisition

- Companion II: Dyne Systems proprietary
- Companion III: Yokogawa based
- Companion IV: NI cRIO based

### Test Automation Software

- Cell Assistant for Windows
- Cell Assistant for LabVIEW™ (VeriStand™)

### Test Cell Safety PLC Interface

- CIA I: Automation Direct / Koyo
- CIA II: Horner
- CIA III: ABB
- CIA IV: Allen-Bradley

### Throttle Accessories

- Actuator, Remote Pendant, Cables

### Eddy Current Dynamometers

- 5–5000 Hp

### AC Dynamometers and Drives

- 5–1600 Hp

### DC Dynamometers and Drives

- 5–1200 Hp