



MW-66-1HS / Engine Dynamometer



Example Model Shown
(Image may not depict all standard included components)

MW-66-1HS Eddy Current Dynamometer

Specifications

Power:	30 hp (22 kW)
Max Torque at Base Speed:	52.5 lb-ft (71.2 Nm)
Base Speed:	3,000 rpm
Max. Speed:	11,000 rpm
Construction Type:	Dry Gap
Rotor Inertia:	0.75 lb-ft ² (0.032 kg-m ²)
Coolant Required at Max. Power:	3 gpm (11.4 lpm)
Coolant Inlet (Min-Max):	55-100 psi (378-689 kPa)
Coolant Inlet Temperature Max:	90°F (32.2°C)
Shipping Weight (estimate):	400 lb (181 kg)
Companion Flange / Hub Pattern:	1310 - US Customary
Coil Voltage / Hot Amperage:	90V / 1.07 amps

Recommended Accessories

- Driveshaft - 1310
- Torsional Coupling - 1310
- Flywheel Adapter Plate Kit
- Driveshaft Guard
- Sub-Base Kit
- Air or Electric Starter
- Water Recirculating System
- T-slot Table
- Calibration Weights

Everything you need to succeed

Optional Accessories



Optional Manual Shaft Lock



Optional Automatic Day Tank



Optional Calibration Weights



Optional Driveshaft Guard



Optional T-Slot Table

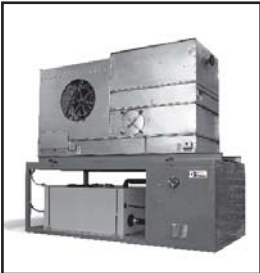
Various Facility Support Systems and Services Available



Bulk Fuel Storage and Distribution



Coolant Storage and Distribution



Water Recirculation

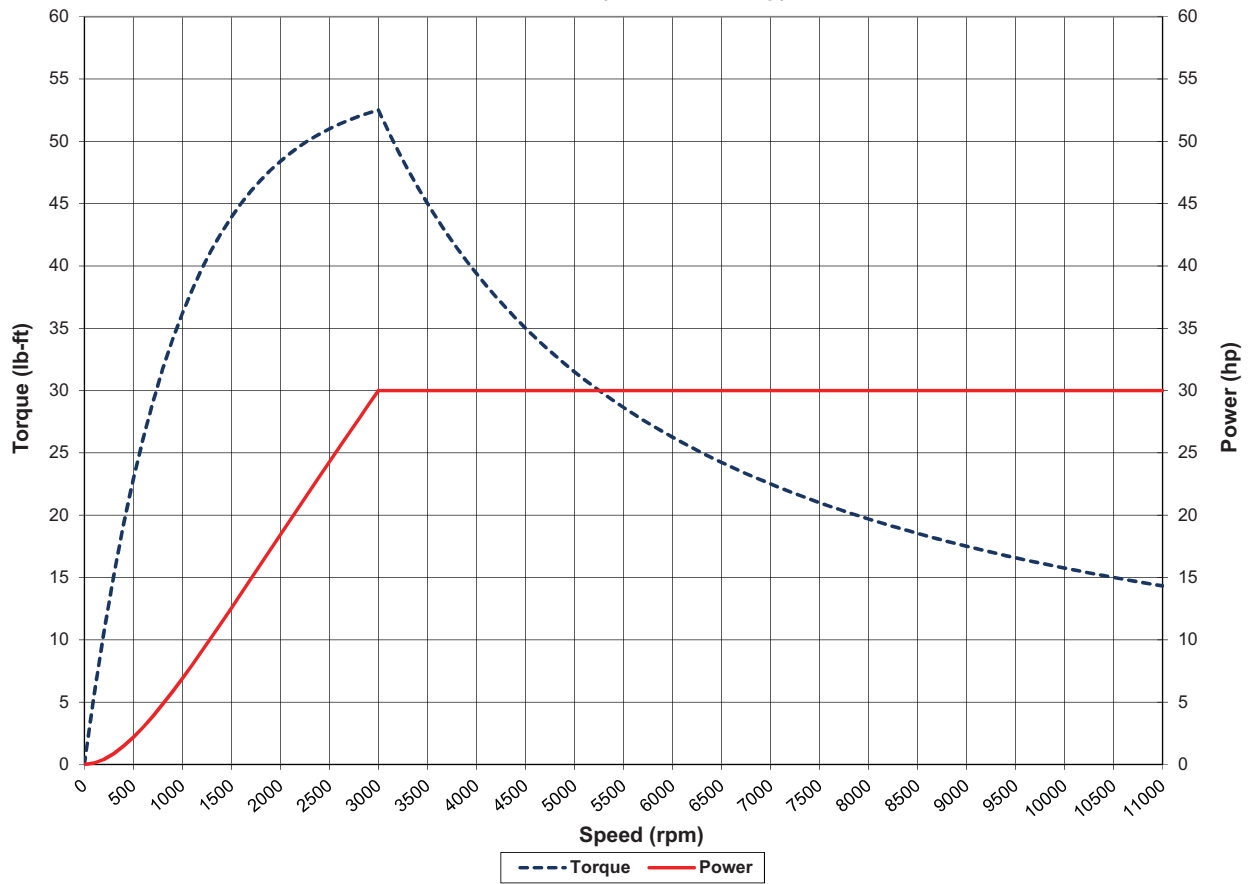


Design, Project & Construction Management Services

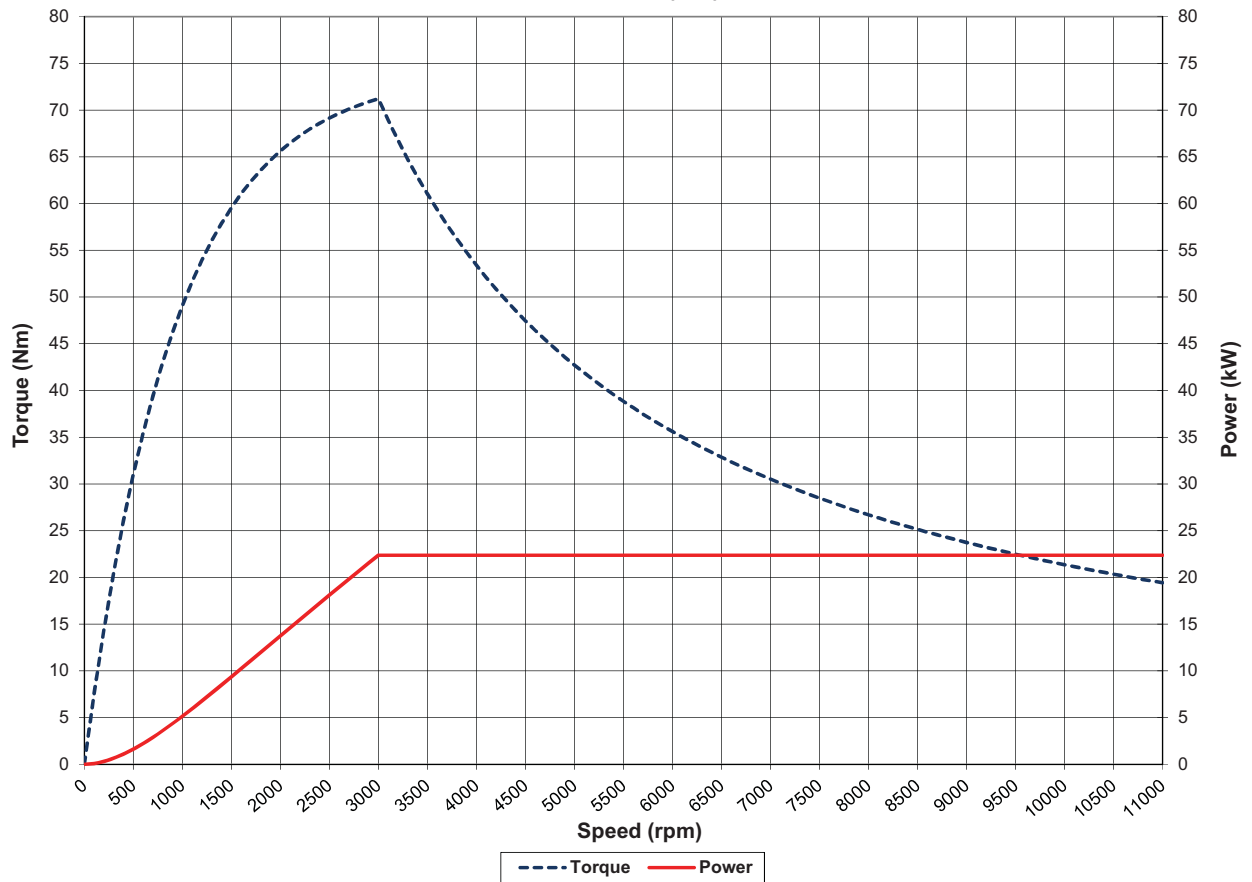


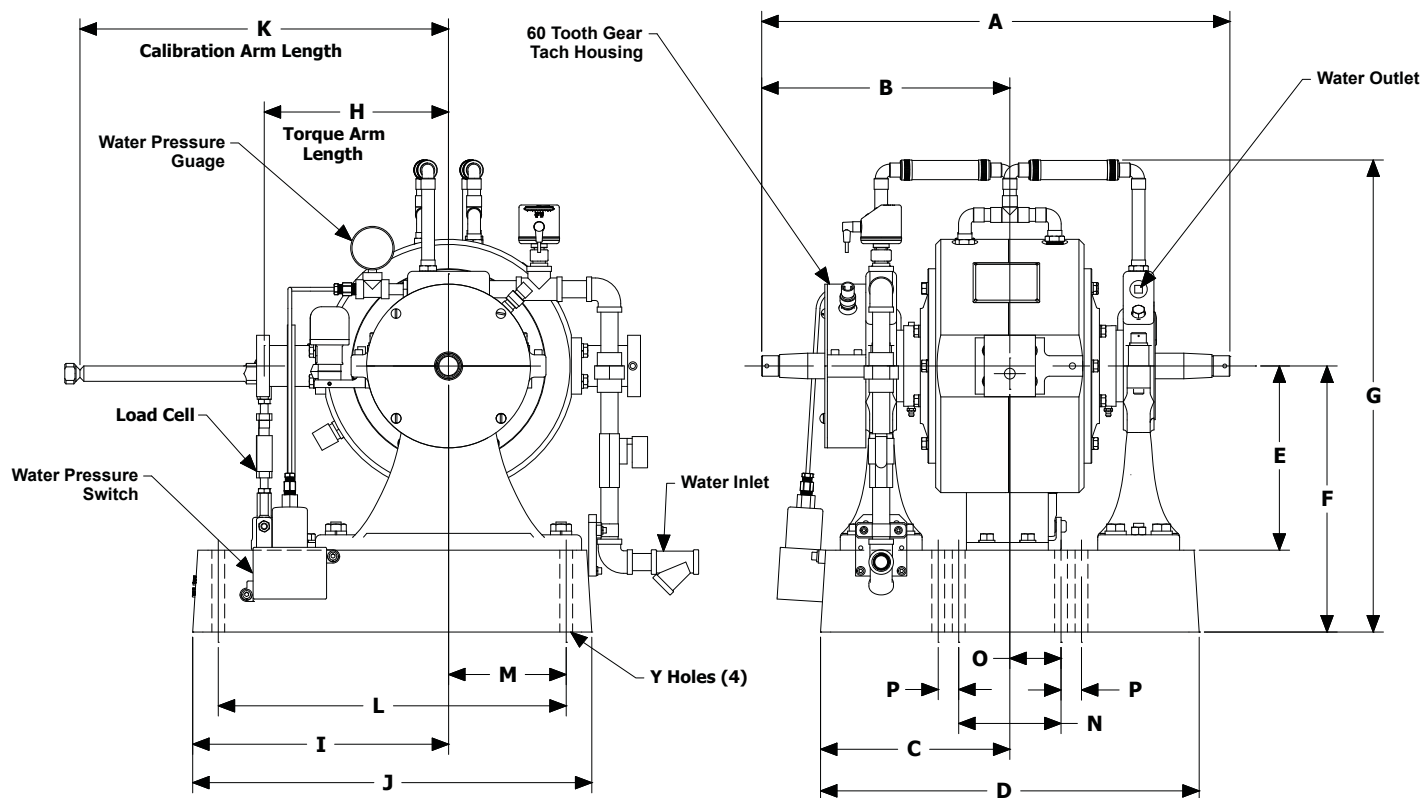
Commissioning, Start-up & Training

MW-66-1HS (US Customary)



MW-66-1HS (S.I.)





Note: Shown without companion flange

Units	A	B	C	D	E	F	G	H
US Customary	22.88	12.12	9.25	18.5	9	13	23	9
S.I.	581	308	235	470	229	330	584	229

Units	I	J	K	L	M	N	O	Y
US Customary	12.5	19.5	18	17	5.75	5	2.5	.63
S.I.	318	495	457	432	146	127	64	16

(All dimensions are for new OEM supplied units)

Standard Included Components

- Load Cell and Linkage
- Cooling Safety Package
- Calibration Arm
- Calibration Weight Hanger
- Companion Flange / Hub Pattern 1310 - US Customary
- Shaft End Guard
- Magnetic Pickup and 60-tooth Gear
- Greased Rotor Bearings

Everything you need to succeed



Dyne Systems is a division of Taylor Dynamometer
 W209 N17391 Industrial Dr., Jackson, WI 53037
 (800) 657-0726 www.dynesystems.com

DS2305v001