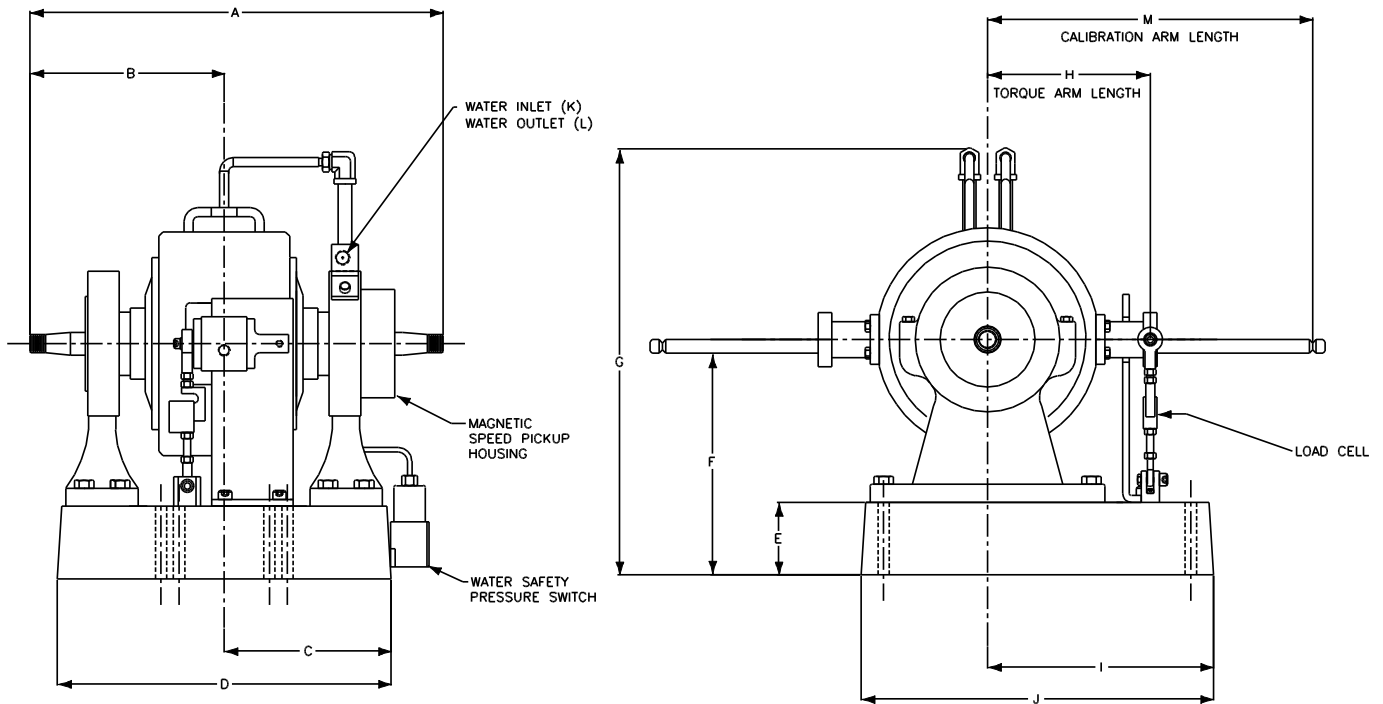


MIDWEST 46 DRY GAP DYNAMOMETER DATA SHEET



DIMENSIONAL TABLE:

A	B	C	D	E	F	G	H	I	J	K	L	M
22 7/8	10 3/4	9 1/4	18 1/2	9.0	13.0	27.0	9.004	12 1/2	19 1/2	0.50	0.50	8.00

- All dimensions are in inches
- All dimensions are for new OEM supplied units

STANDARD INCLUDED OPTIONS:

- Magnetic Pickup and 60-tooth Gear
- Greased Bearings

SPECIFICATIONS

Model Number	MW46
Construction Type	Dry Gap
Maximum Horsepower	10 Hp
Base Speed	3,600 rpm
Maximum Speed	7,000 rpm
Maximum Torque at Base Speed	17.5 ft lb
Rotor Inertia	0.14 lb ft ²
Coolant GPM Required @ Max Hp	1.0 gpm
Coolant Inlet PSI (Min/Max)	55-100 psi
Coolant Inlet Temperature (Max)	90°F
Water Inlet Size	1/2" NPT
Water Outlet Size	1/2" NPT
Shipping Weight (estimate)	lbs
Overhung Weight Load @ Max Speed	lbs

OPTIONS

Coil Specifications: 90 Volts / 2.34 Amps
Shaft End (Taper or Straight), Key or Keyless
Load Cell and Linkage
Cooling Safety Package which includes the following:
- Solenoid Valve
- Y-Strainer
- Water Flow Switch
- Exit Water Temperature Switch
- Water Pressure Switch & Gauge
Calibration Arm and Standard Weight Hanger
Calibration Weights
Shaft Hub
Manual Shaft Lock
Pressurized Re-Circulating Oil System