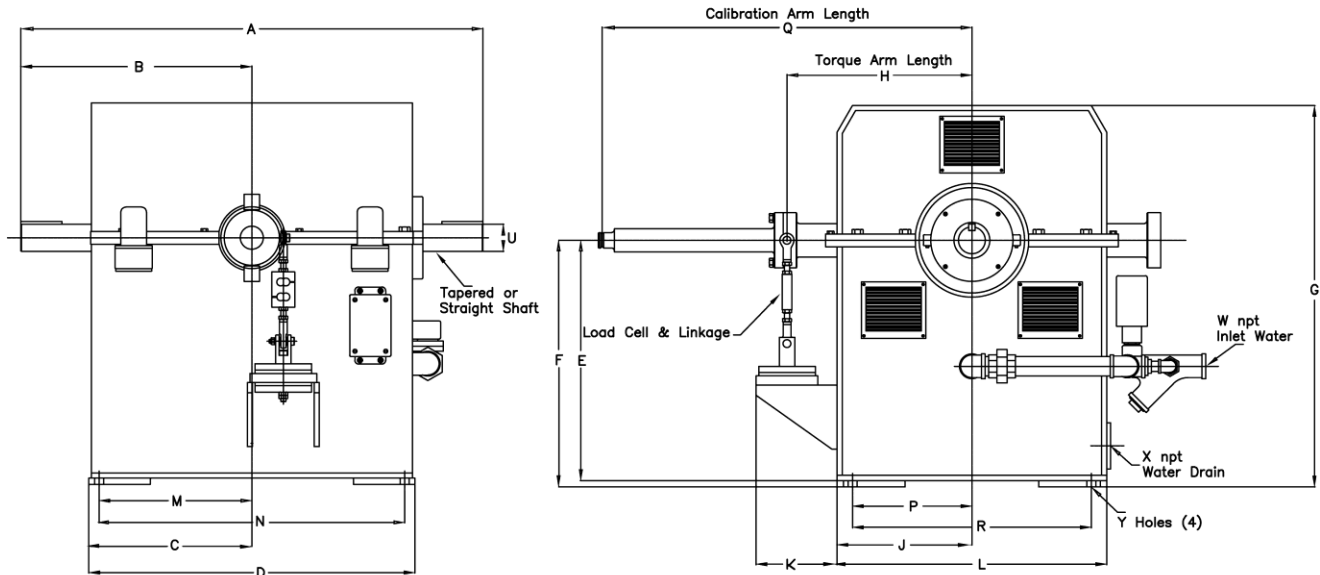


DATA SHEET



DIMENSIONAL TABLE:

A	B	C	D	E	F	G	H	J	K	L	M
26.00	13.00	9.86	19.72	12.12	13.00	17.00	12.00	7.75	6.00	15.50	9.00
N	P	Q	R	S	T	U	V	W	X	Y	Z
18.00	6.25	18.00	12.50	--	--	1.25	--	0.75	2.00	0.62	--

- All dimensions are in inches
- All dimensions are for new OEM supplied units

STANDARD INCLUDED OPTIONS:

- Magnetic Pickup and 60-tooth Gear
- Constant Level Oilers

SPECIFICATIONS

Model Number	DM8062
Construction Type	Wet Gap
Maximum Horsepower	175 Hp
Base Speed	5,350 rpm
Maximum Speed	12,000 rpm
Maximum Torque at Base Speed	172 lb ft
Rotor Inertia	1.40 lb ft ²
Coolant GPM Required @ Max Hp	17.5 gpm
Coolant Inlet PSI (Min/Max)	55-100 psi
Coolant Inlet Temperature (Max)	90°F
Water Inlet Size	0.75 NPT
Water Outlet Size	2.00 NPT
Shipping Weight (estimate)	350 lbs
Overhung Weight Load @ Max Speed	lbs

OPTIONS

Coil Specifications: 90 Volts / 11.1 Amps
Shaft End (Taper or Straight (Key or Keyless))
Load Cell and Linkage
Cooling Safety Package which includes the following:
- Solenoid Valve
- Y-Strainer
- Modulating Valve & Constant Flow Valve
- Water Flow Switch
- Exit Water Temperature Switch
- Water Pressure Switch & Gauge
Calibration Arm and Standard Weight Hanger
Calibration Weights
Shaft Hub
Manual Shaft Lock
Pressurized Re-Circulating Oil System