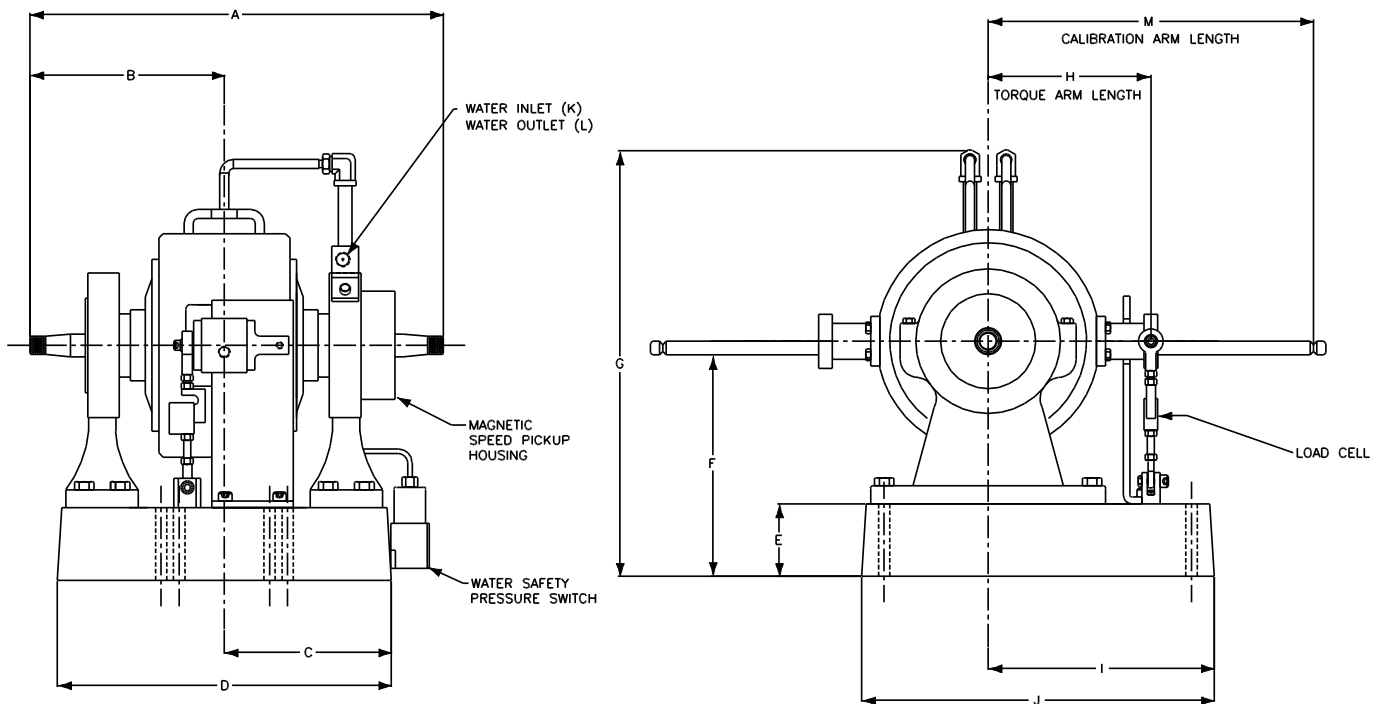


## DYNAMATIC 66 DRY GAP DYNAMOMETER DATA SHEET



### DIMENSIONAL TABLE:

A	B	C	D	E	F	G	H	I	J	K	L	M
22 7/8	10 3/4	9 1/4	18 1/2	9.0	13.0	27.0	9.004	12 1/2	19 1/2	1/2	1/2	18.0

- All dimensions are in inches
- All dimensions are for new OEM supplied units

### STANDARD INCLUDED OPTIONS:

- Magnetic Pickup and 60-tooth Gear
- Constant Level Oilers

### SPECIFICATIONS

Model Number	DM-66DG
Construction Type	Dry Gap
Maximum Horsepower	40 Hp
Base Speed	3,300 rpm
Maximum Speed	6,000 rpm
Maximum Torque at Base Speed	63.7 ft lb
Rotor Inertia	0.75 lb ft <sup>2</sup>
Coolant GPM Required @ Max Hp	8.0 gpm
Coolant Inlet PSI (Min/Max)	55-100 psi
Coolant Inlet Temperature (Max)	90°F
Water Inlet Size	1/2" NPT
Water Outlet Size	1/2" NPT
Shipping Weight (estimate)	350 lbs
Overhung Weight Load @ Max Speed	lbs

### OPTIONS

Coil Specifications:
Shaft End (Taper or Straight), Key or Keyless
Load Cell and Linkage
Cooling Safety Package which includes the following:
- Solenoid Valve
- Y-Strainer
- Water Flow Switch
- Exit Water Temperature Switch
- Water Pressure Switch & Gauge
Calibration Arm and Standard Weight Hanger
Calibration Weights
Shaft Hub
Manual Shaft Lock
Pressurized Re-Circulating Oil System